



## Rasico® Colours

The art of  
**harmony**

**EN** With Rasico® you can choose between two different finishes: **Rasico®** and **Rasico® Touch**. For a softer and less tactile effect compared to the original 'classic' finish, one can opt for Rasico® Touch, made possible by an additional coat of material. Ideal for places where the slip-resistant feature is not as critical, such as porches, patios and gazebos.

Rasico® finish choice is expanded with three new textures in addition to the original classic design: **Trama**, **Corteccia** and **Striato**.

Rasico® uses Colour Pack-C. In this table Rasico's 27 standard shades are divided by colour line according to Ideal Work's colour scheme. Each colour can be combined tone-on-tone horizontally or with different colour groups vertically.

The colours listed in this page are only indicative; Ideal Work authorised applicator will create an ad hoc sample for you to see and touch the colour and finish you would like to choose.

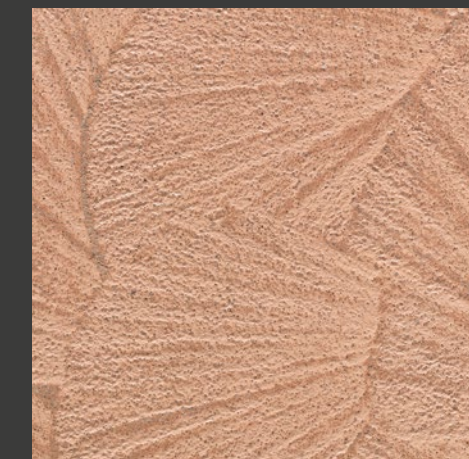
**IT** Rasico® dà la possibilità di scegliere tra due diverse finiture: **Rasico®** e **Rasico® Touch**. Per un effetto più morbido e meno materico rispetto a quello classico si può optare per Rasico® Touch realizzabile con uno strato in più di materiale. Ideale per i luoghi dove non è necessario un alto effetto antiscivolo, come portici, patii e gazebi.

Oltre alla classica fiammatura Rasico® propone in altri tre disegni: **Trama**, **Corteccia** e **Striato**.

Rasico® usa il colorante Colour Pack-C. In questa tabella i 27 colori standard sono divisi per linea cromatica secondo lo schema colori Ideal Work. Ogni colore è combinabile tono su tono in orizzontale e tra i differenti gruppi di colore in verticale.

I colori riportati in questa pagina sono solo indicativi, sarà poi l'applicatore autorizzato Ideal Work che realizzerà un campione ad hoc per poter vedere dal vivo colore e finitura.

CLASSIC



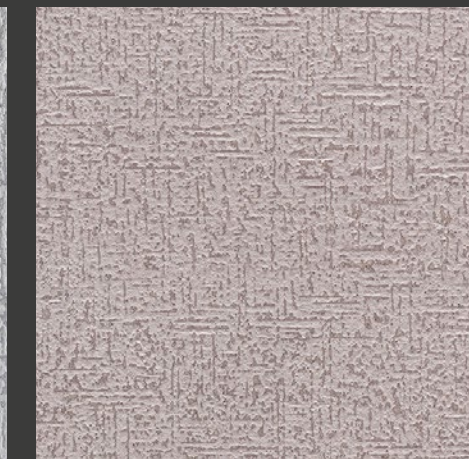
TOUCH



CORTECCIA



TRAMA



STRIATO



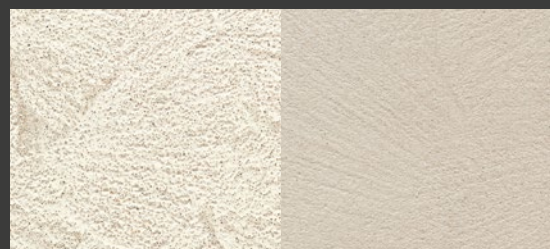


← LIGHT ——— SOFT ——— GREY ——— DARK ——— DEEP ——— STRONG ——— PASTEL ——— →

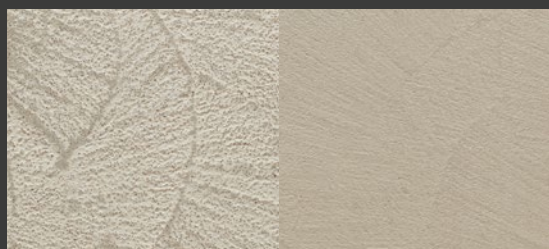
←————— Tone on tone —————→



**WHITE**  
PACK-C-WHITE



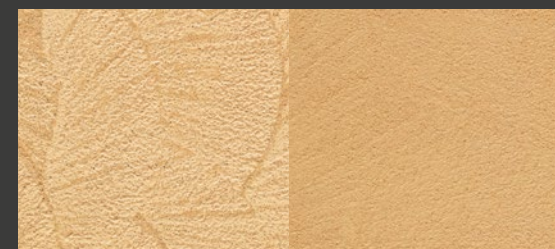
**TORTORA**  
PACK-C-TORTORA



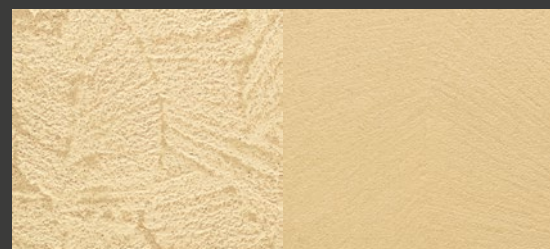
**OLIVE GREY**  
PACK-C-OLIVE GREY



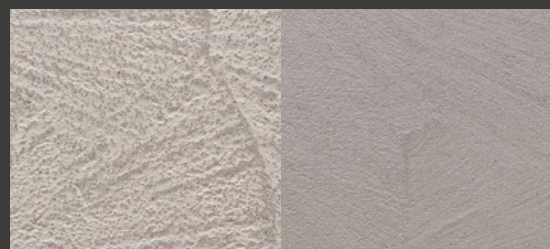
**OCCHIALINO**  
PACK-C-OCCHIALINO



**YELLOW**  
PACK-C-YELLOW



**IVORY**  
PACK-C-IVORY



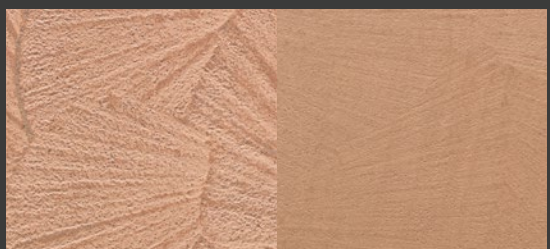
**BEIGE GREY**  
PACK-C-BEIGE GREY



**CHOCOLATE**  
PACK-C-CHOCOLATE



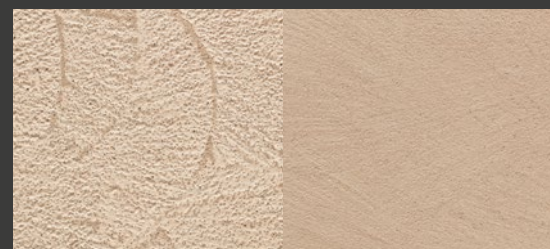
**CHARCOAL**  
PACK-C-CHARCOAL



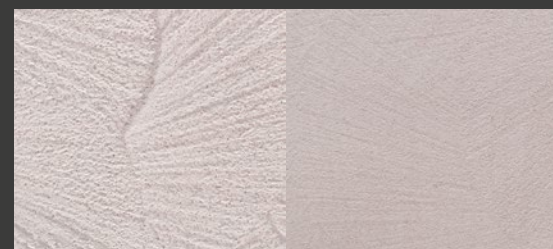
**TERRACOTTA**  
PACK-C-TERRACOTTA



**MAPPLEWOOD**  
PACK-C-MAPPLEWOOD



**BEIGE**  
PACK-C-BEIGE



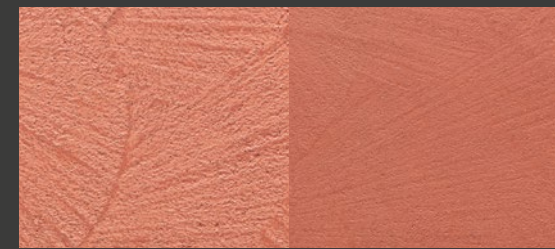
**LAVANDA**  
PACK-C-LAVANDA



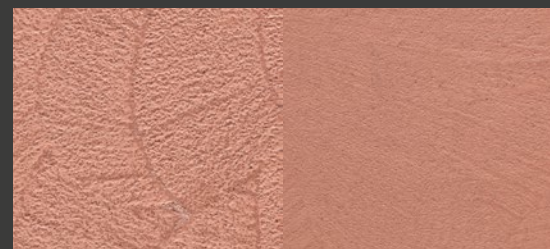
**BROWN**  
PACK-C-BROWN



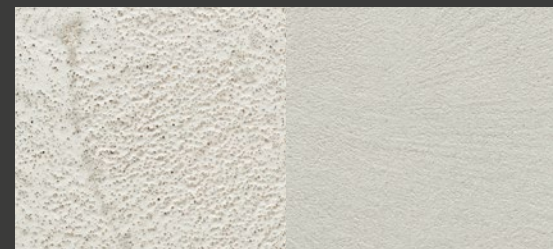
**RED**  
PACK-C-ROSSO MAT X2



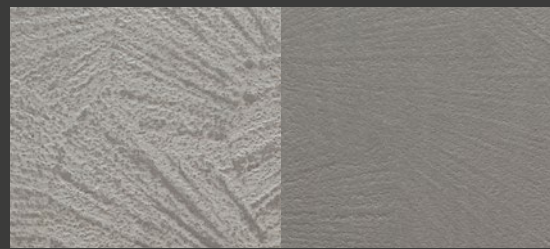
**ROSSO MATTONE**  
PACK-C-ROSSO MAT



**ROSE**  
PACK-C-ROSE



**SILVER GREY**  
PACK-C-SILVER GREY



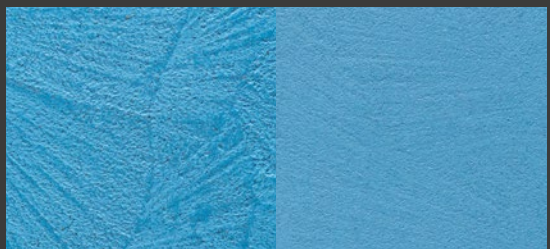
**SMOKE**  
PACK-C-SMOKE



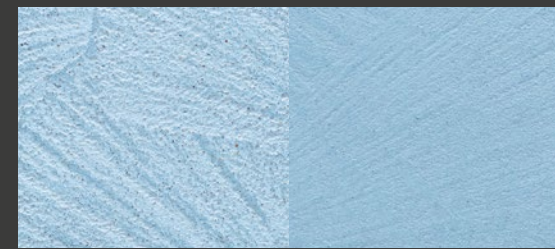
**GRAFITE**  
PACK-C-GRAFITE



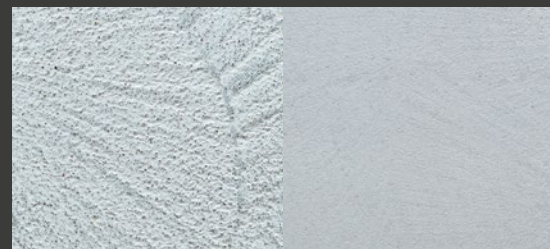
**BLACK**  
PACK-C-BLACK



**BLUE**  
PACK-C-BLUE



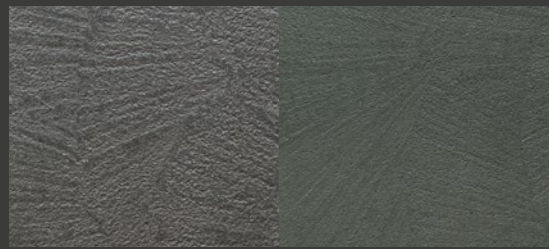
**SKY BLUE**  
PACK-C-SKYBLUE



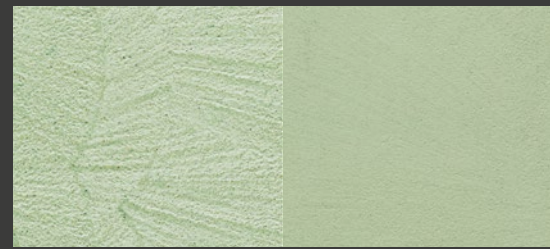
**PALE BLU**  
PACK-C-PALE BLUE



**MARINE**  
PACK-C-MARINE



**ARGILLA**  
PACK-C-ARGILLA



**ACQUA MARINA**  
PACK-C-ACQUA MARINA

Yellow

Orange

Red

Blue

Green

↑ WARM

↓ FRESH

Combining different colour groups